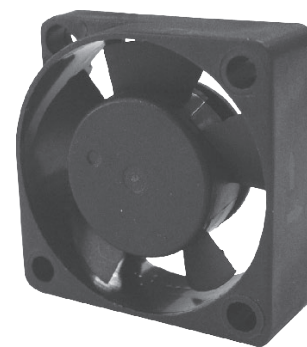


**3010**

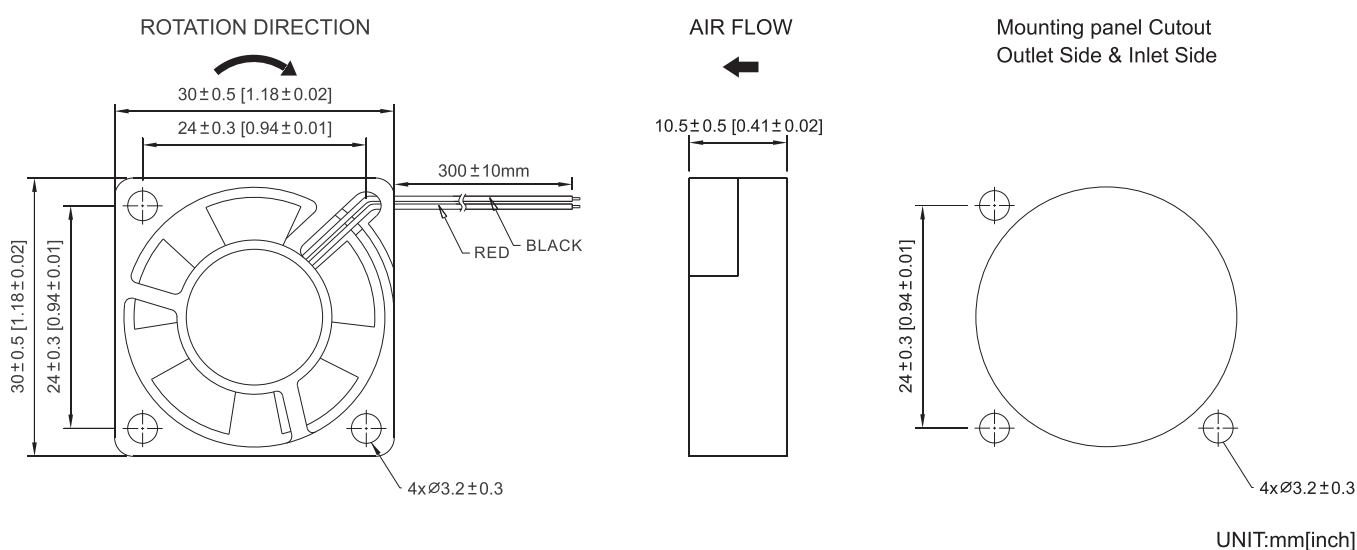
<b>HOUSING</b>	Thermoplastic PBT, UL94V-0
<b>IMPELER</b>	Thermoplastic PBT, UL94V-0
<b>BEARING</b>	Ball
<b>OPERATION TEMPERATURE</b>	-10 to +60 °C
<b>DIELECTRIC STRENGTH</b>	5 mA Max. at 500 Vac 60 Hz for 1 minute
<b>INSULATION RESISTANCE</b>	10 M Ohms min. @ 500 Vdc
<b>WEIGHT</b>	9 g
<b>ROHS COMPLIANCE</b>	Yes



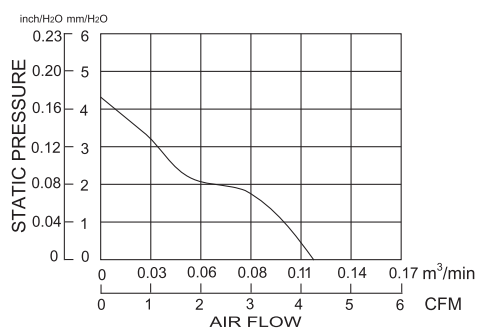
**SIZE**

30 x 30 x 10 mm

**DIMENSION**



**AIR PERFORMANCE**



**SPECIFICATION**

MODEL NO	Rated Voltage	Rated Current	Input Power	Speed	Maximum Air Flow	Maximum Air Pressure	Noise
	VDC	Amp	Watt	R.P.M.	CFM / m <sup>3</sup> /min	inchH <sub>2</sub> O / mmH <sub>2</sub> O	dB-A
ART1604-3010-12-TACHO	12	0.13	1.56	11000	4.24 / 0.12	0.17 / 4.3	25